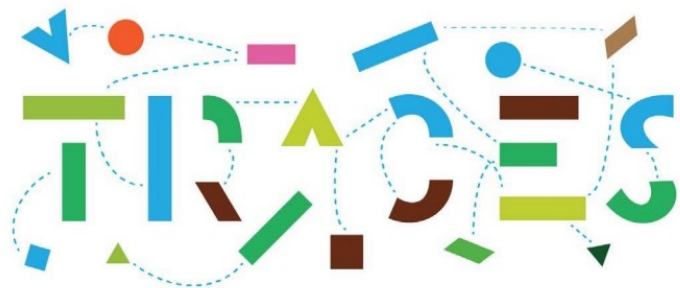
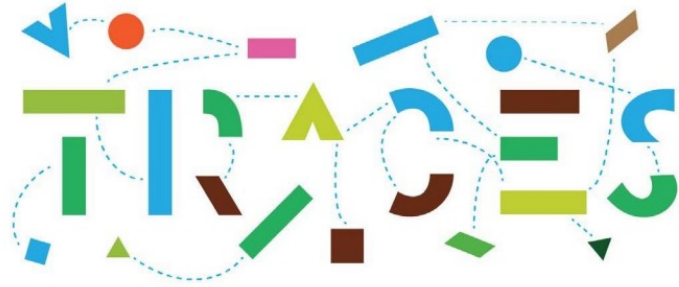
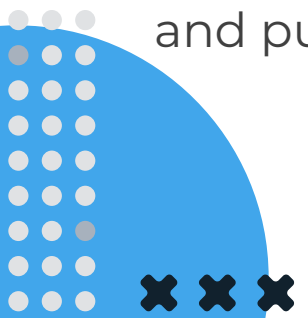


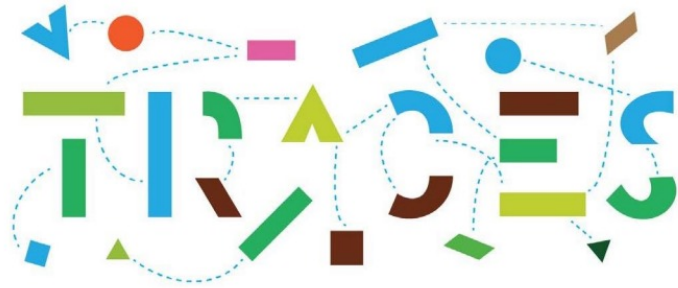
CASE STUDY





TRACES is the European Commission's online platform for animal and plant health certification required for the importation of animals, animal products, food and feed of non-animal origin and plants into the European Union, and the intra-EU trade and EU exports of animals and certain animal products. This video provides a summary of the background and purpose of the TRACES platform.





KEY FIGURES OF TRACES PROJECT

**Over 4.6
million**

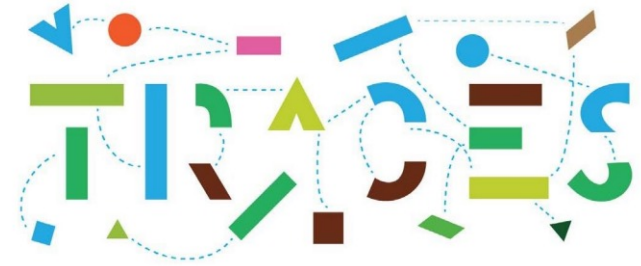
official documents
issued and transmitted
to TRACES in 2022

**More than
113000 users**

from EU and non-EU
authorities and businesses
connected to TRACES

**More than 90
countries**

In 2022, more than 90
countries used TRACES
worldwide



CHALLENGE :

To certify imports/exports worldwide to and from the European Union, in accordance with the eIDAS Regulation, in order to optimise the digital onboarding of exporting/importing entities via the European Commission's online platform for sanitary and phytosanitary certification - Traces NT.



SOLUTION:

Issuance of **qualified electronic seals** for each of the importing/exporting entities through the **DigitalSign Partner Portal**, where organisations begin the onboarding process by filling in an application, offering four validation methods: Video call, Portability from another QTSP, Signature with a qualified digital certificate, Document validation by post.



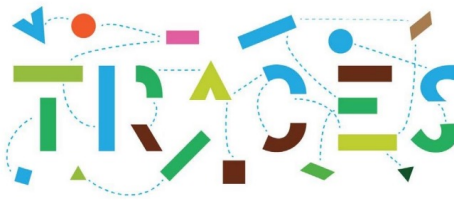
RESULT:

Since the beginning of the project in 2022, around **302 organisations have successfully completed the DigitalSign onboarding process**, opting for the validation method most convenient to their reality, which has enabled them to quickly and easily obtain Qualified eSEALs, issued by DigitalSign, in accordance with the eIDAS Regulation, thus enabling them to qualifiedly certify critical documents on TRACES NT platform.





Request a Traces voucher
Express interest in obtaining an electronic signature and appoint an eSeal manager



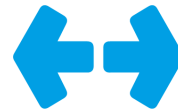
eSeal Manager creates new eSeal request in DS portal



DigitalSign Validation department approves/rejects request



DOCUMENTARY VALIDATION BY POSTAL MAIL



PORTABILITY OF ANOTHER QTSP



SIGNATURE WITH QUALIFIED DIGITAL CERTIFICATE



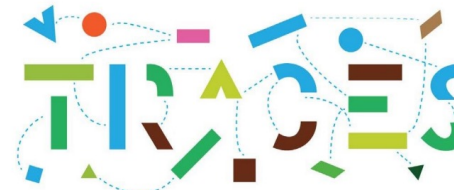
VIDEO CALL



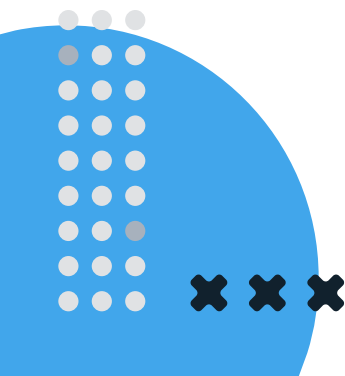
Here they opt for 1 of 4 validation methods



DS PORTAL
eSeal issuance



eSeal Automatically Configured in TRACES Account





digitalsign ✓